



HITACHI
Inspire the Next

MACHINE ROOM BED ELEVATOR

CONTENT

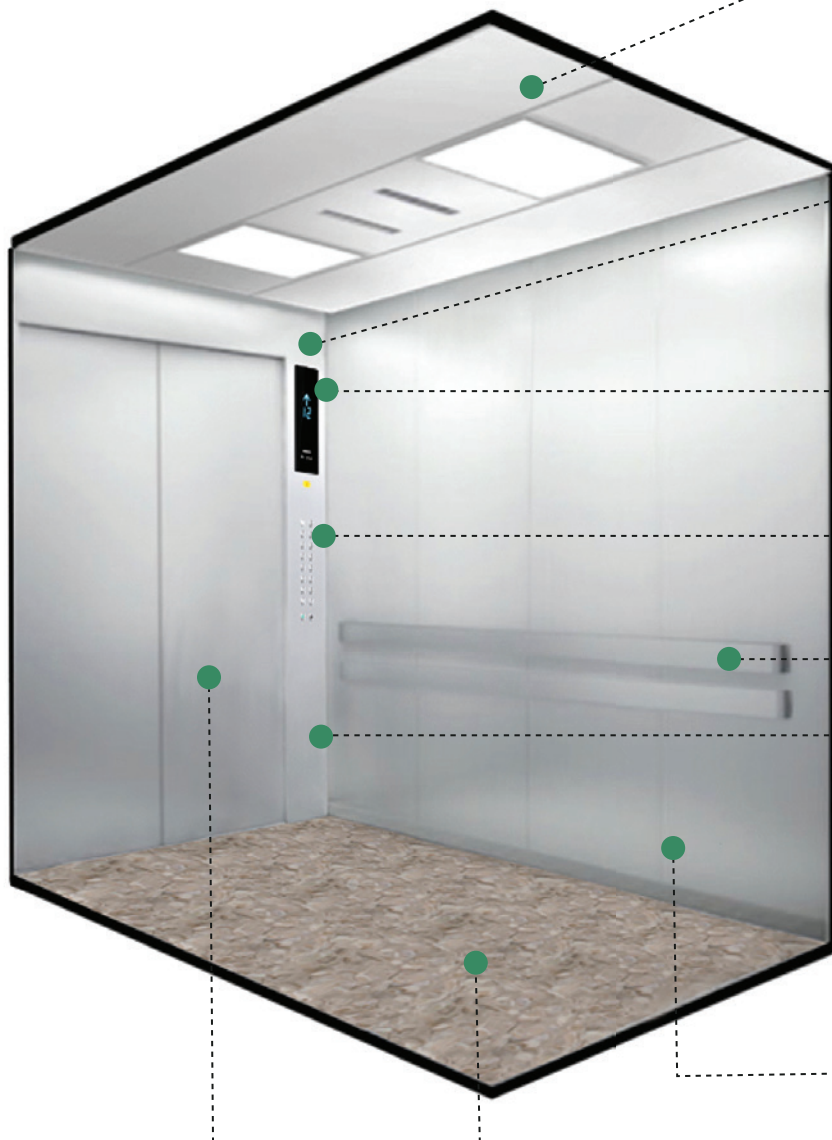
SPECIFICATION LIST	1
DECORATION	2-8
ELEVATOR PLANNING GUIDE	9-14

SPECIFICATION LIST

Load (kg)	Capacity (Person)	Speed (m/min)	Door type	Stop	Max Travel Distance (m)	Minimum Height (mm)	Max No. of Car in Group Control
1050	14	60/90/105	Single Door	26	70	2600	8
			Through Door	22	60		

STANDARD MODEL

CAR DESIGN



Car Ceiling:
CS-101
Stainless steel hairline
Center LED panel light

Car Transom:
Stainless steel hairline

Car Position Indicator:
Monochrome LCD

Car Operating Panel:
GOPR-820

Handrail:
AA-BS
Stainless steel hairline

Car Front Return Panel:
Stainless steel hairline

Car Walls:
Stainless steel hairline

Car Door:
Stainless steel hairline

Car Floor:
Vinyl tile 5A503571 (Cappuccino)

DECORATION



CAR CEILING

(With Car Top Emergency Exit)



CS-101

STANDARD

Center: Milky white acrylic

Surrounding: Stainless steel hairline

Illumination: Four LEDs lighting^{*1}

Ventilation: Twin ceiling fans

Air Flow Quantity: 12 m³/min
(6 m³/min per single fan)

Remark

^{*1} The LED lighting is light temperature is 6500K and luminance average is 108.8 lux at floor level.

DECORATION

STAINLESS STEEL



Stainless steel
hairline



Stainless steel
mirror

STANDARD

ETCHING PATTERN



MD-315



PT-014



MD-351

COLOR STAINLESS STEEL (HAIRLINE)



Rose Gold



Champagne
Gold



Titanium Gold

CAR FLOOR (Vinyl Tile)

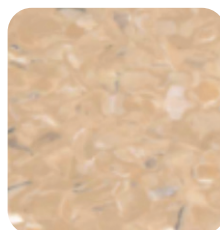
TILE



5A503571
(Cappuccino)



5A503711
(Murray clay)



5A503731
(Capricorn
Beige)



5A503721
(Darling grey)

STANDARD

SHEET TILE



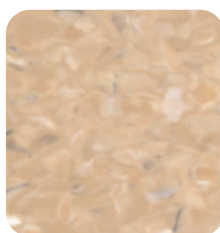
A-26



S-043



S-033



S-048



S-693

CAR OPERATING PANEL



GOPR-820 STANDARD

Indicator : Monochrome LCD
Button : WL-MWB

GOP-199

Indicator : Monochrome LCD
Button : WL-MWB



WHEELCHAIR CAR OPERATING PANEL

GOP-610

Button: WL-MWB

DECORATION

HANDRAIL



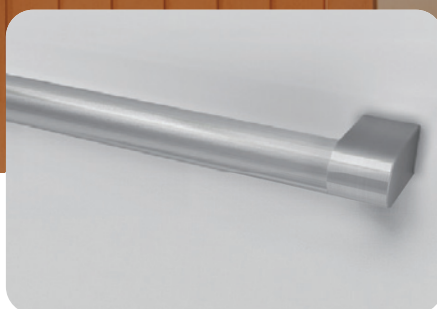
AA-BS

STANDARD

(FLAT TYPE)*1

(stainless steel hairline)

Width: 90 mm



HR-M052

(ROUND PIPE TYPE)*1

(stainless steel hairline)

Diameter: 38.1 mm



WH-L100

(ROUND PIPE TYPE)*2

(stainless steel hairline)

Diameter: 38.1 mm

Remark:

*1 The handrail installation is three sides with twin levels on the panel.

*2 The handrail installation for the wheelchair elevator is three sides with single level on the panel.



DOOR JAMB

AS-1X (2S2P)

STANDARD

NARROW JAMB

Jamb*3: Stainless steel hairline*4

Landing door*3: Stainless steel hairline*4

Remark:

*3 Stainless steel mirror, Etching, Colored stainless steel are available for options.

*4 SUS430 (Standard), SUS304 (Option)

HALL OPERATING PANEL

(With faceplate: Stainless steel hairline)



VIB-820

Indicator :
Monochrome LCD
Surface-mount type
Button: WL-MWB



VIB-820W

Indicator :
Monochrome LCD
Surface-mount type
Button: WL-MWB



HB-658

Surface-mount type
Button: WL-MWB



HBC-820

Surface-mount type
Button: WL-MWB

STANDARD

HALL LANTERN



GHL-820

Surface-mount type

HALL INDICATOR



GHI-675

Indicator: Dot matrix display
(Embedded type)

WL-MWB STANDARD

Size: φ36 mm
Material Rim: Stainless steel brushed,
Material Faceplate: Circular stainless steel hairline
Illumination: Symbol and periphery lighted up in white
Braille is available

Open Close Not illuminated Illuminated



GL-MW

Size: 42x37 mm
Material Rim: Stainless steel brushed,
Material Faceplate: Stainless steel hairline
Illumination: Symbol and periphery lighted up in white
Braille is available



WL-MO

Size: φ36 mm
Material Rim: Stainless steel brushed,
Material Faceplate: Circular stainless steel hairline
Illumination : Symbol and periphery lighted up in orange
Braille is available



GL-MOA

Size: 42x37 mm
Material Rim: Stainless steel brushed,
Material Faceplate: Stainless steel hairline
Illumination: Symbol and periphery lighted up in orange
Braille is available



● Standard ● Option

Item	Specification	
Button	WL-MWB	●
	GL-MW / WL-MO / GL-MOA	●

CAR DECORATION

● Standard ● Option

Item	Specification	
Ceiling Type	With car top emergency exit : CS-101	●
Car Door / 3 Side walls / Front Return Wall / Transom	Stainless steel hairline	●
	Stainless steel special (Stainless steel mirror / Etching / Colored stainless steel)	●
Kick plate	Stainless steel hairline	●
Car Sill	Extruded hard aluminum	●
Car Floor	5A503571 (Cappuccino)	●
	5A503711 (Murray clay)	●
	5A503721 (Darling grey)	
	5A503731 (Capricorn Beige)	
	Sheet Tile: A-26 / S-033/S-048/S-693/S-043	
Handrail	AA-BS (Three sides with twin levels)	●
	HR-M052 (Three sides with twin levels)	●
	WH-L100 (Three sides with single level) (For wheelchair elevator)	
Car Operating Panel	GOPR-820 (Front Return Panel)	●
	GOP-199 (At side panel)	●
Car Operating Panel (Wheelchair at Side Wall)	GOP-610	●

ENTRANCE DECORATION

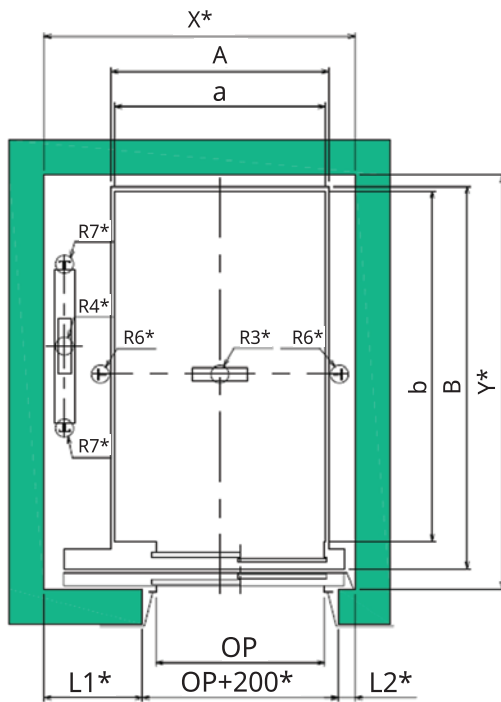
Item	Specification	
Jamb Type	AS-1X, Jamb width=50mm	●
Jamb Finish	Stainless steel hairline	●
	Stainless steel special (Stainless steel mirror / Etching / Colored stainless steel)	●
Landing Door	Stainless steel hairline	●
	Stainless steel special (Stainless steel mirror / Etching / Colored stainless steel)	●
Landing Sill	Extruded hard aluminum	●
Hall Operating Panel	Surface-mount type : VIB-820	●
	Surface-mount type : VIB-820W / HB-658 / HB-820 / HBC-820 (Wheelchair)	●
Hall Lantern	GHL-820	●
Hall Indicator	GHI-675	●

The background of the page is a photograph of an elevator interior. On the left is a dark brown wooden door. To the right of the door is a light-colored wall with horizontal lines. A vertical silver elevator control panel is mounted on the wall. The panel has a small digital display at the top showing a blue upward arrow and the number '23'. Below the display are two circular buttons, one with an upward arrow and one with a downward arrow.

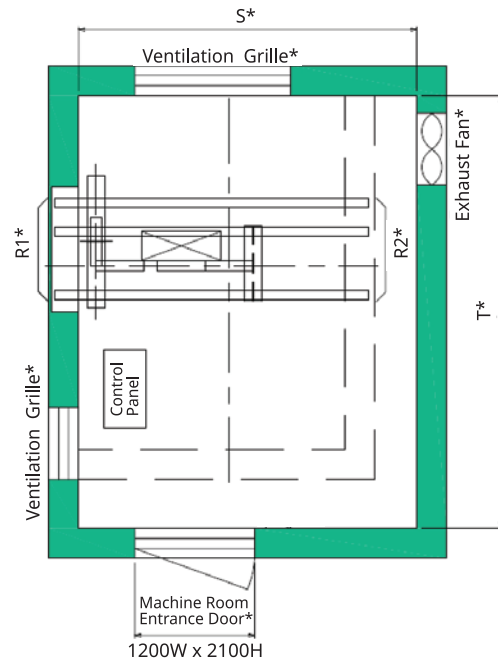
ELEVATOR PLANNING GUIDE

HOISTWAY

SINGLE OPENING



Hoistway Plan
Left Side Counterweight Layout



Machine Room Plan
Left Side Counterweight Layout

Load (kg)	Speed (m/min)	Car Size (mm)		Door Opening (mm)		OPB Mounting Position	Front Wall Arrangement (mm)	
		Inside a x b	Outside A X B	Type	Width OP		L1	L2
1050	60	1500 x 2500	1550 x 2728	2S-2P	1200	Front, Side	700	120
	90							
	105							

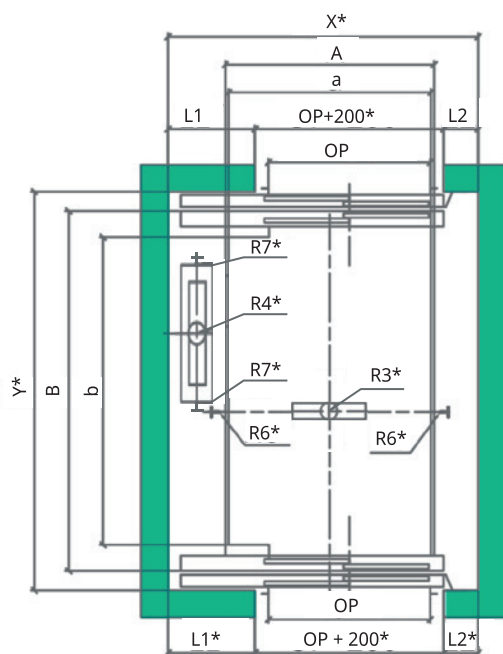
Load (kg)	Speed (m/min)	Hoistway Size (mm)	Machine Room Size (mm)	Reaction Loading (kN)					
		X x Y	S x T	R1	R2	R3	R4	R6	R7
1050	60	2220 x 2953	2220 x 2953	67.6	40.2	135	113	42	3
	90			70.4	42.1	145	123	50	5
	105								

Remark

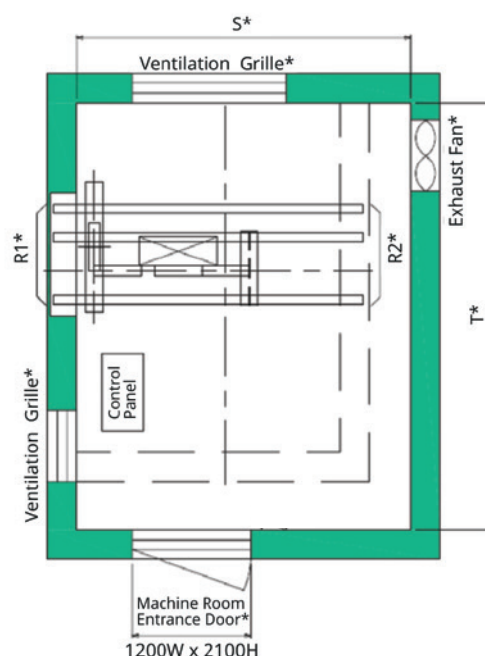
- Items with "*" in the picture shall be furnished by building contractors.
- The above information and configuration are based on left side counterweight layout.
- The above parameters are based on Hitachi standard.
- B-III is primarily intended for transporting patients on beds and stretchers in hospitals, nursing homes, and similar facilities. It should not be used in the building where beds and stretchers are not transported daily, such as office buildings. In large hospitals and similar facilities, elevators should be installed according to the specifications, such as by installing passenger elevators.

ELEVATOR PLANNING GUIDE

HOISTWAY THROUGH OPENING



Hoistway Plan
Left Side Counterweight Layout



Machine Room Plan
Left Side Counterweight Layout

Load (kg)	Speed (m/min)	Car Size (mm)		Door Opening (mm)		OPB Mounting Position	Front Wall Arrangement (mm)	
		Inside a x b	Outside A X B	Type	Width OP		L1	L2
1050	60	1500 x 2500	1550 x 2890	2S-2P	1200	Front, Back	700	120
	90							
	105							

Load (kg)	Speed (m/min)	Hoistway Size (mm)	Machine Room Size (mm)	Reaction Loading (kN)					
		X x Y	S x T	R1	R2	R3	R4	R6	R7
1050	60	2220 x 3180	2220 x 3180	67.6	40.2	135	113	42	3
	90			70.4	42.1	145	123	50	5
	105								

Remark

- Items with "*" in the picture shall be furnished by building contractors.
- The above information and configuration are based on left side counterweight layout.
- The above parameters are based on Hitachi standard.
- B-III is primarily intended for transporting patients on beds and stretchers in hospitals, nursing homes, and similar facilities. It should not be used in the building where beds and stretchers are not transported daily, such as office buildings. In large hospitals and similar facilities, elevators should be installed according to the specifications, such as by installing passenger elevators.

OVERHEAD AND PIT DEPTH

Hoistway Section

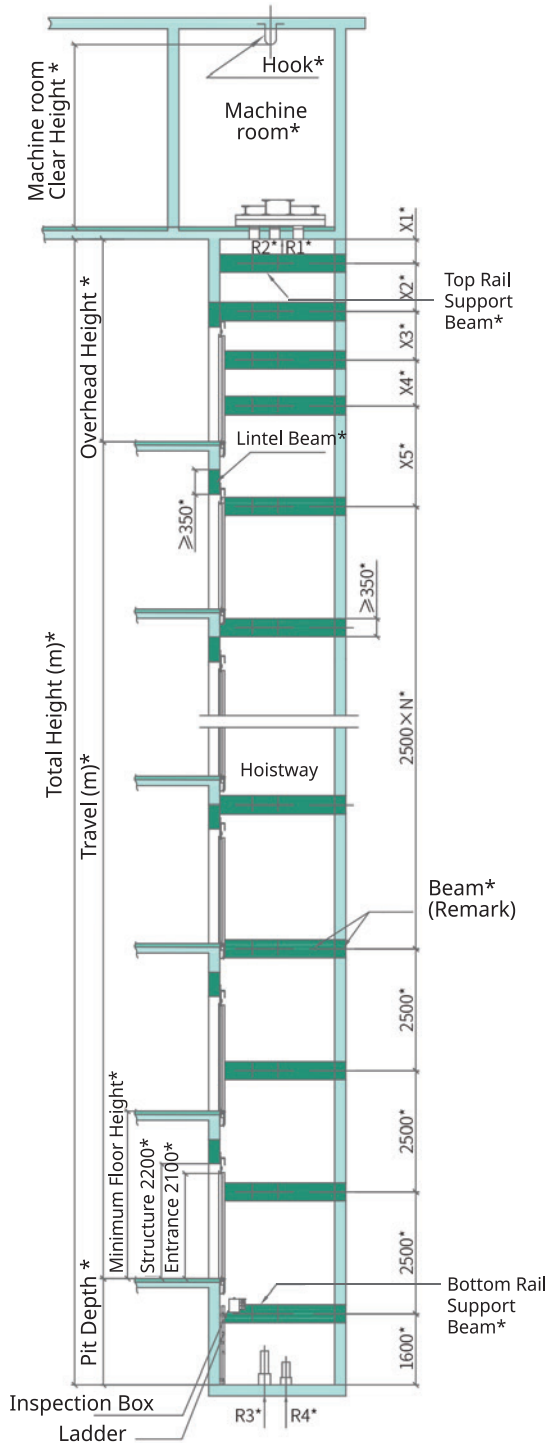


Table no.1

Load (kg)	Overhead / Pit	Speed (m/min)		
		60	90	105
1050	Overhead	4600	4800	4800
	Pit depth	1450	1500	1500

Table no.2

Load (kg)	Speed (m/min)	Machine Room Clear Height (mm)	The suspension hooks capacity (Tons)
1050	60/90/105	2100	3

The following shall be furnished by building contractors:

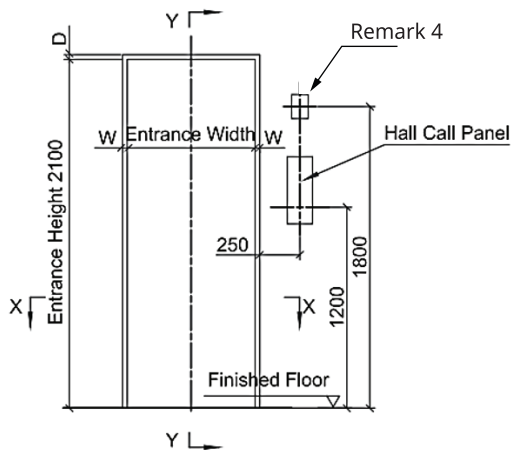
- Building Structure
- Wall and Floor Finishes
- Beam

Remark

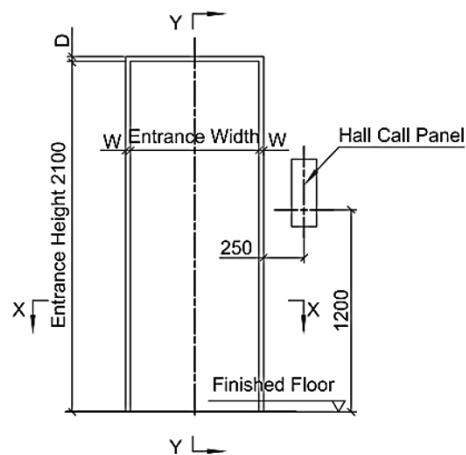
1. The overhead height follow table 1 is based on bare ceiling height of 2450 mm.
2. The pit depth follow table 1 is based on vinyl tile finish without recess.
3. The suspension hocks capacity shall be follow table 2.
4. Items marked with "*" shall be furnished by building contractors.
For detailed parameters such as the limed, shaft wall, and guide rail bracket spacing, please contact us.
5. The above picture and configuration are based on left side counterweight Layout.
- 6 Unit of dimension shall be in mm unless otherwise stated.
7. The hoistway construction shall be reinforced concrete ring beam with strength C25 or whole hoistway of reinforced concrete wall. If you have other situations, please contact us.

ENTRANCE DESIGN

Elevation of Entrance

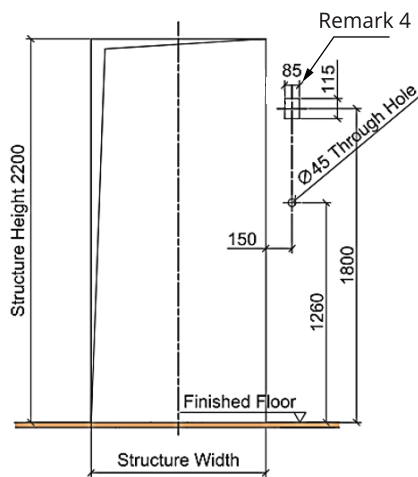


For Entrance With Fireman Switch

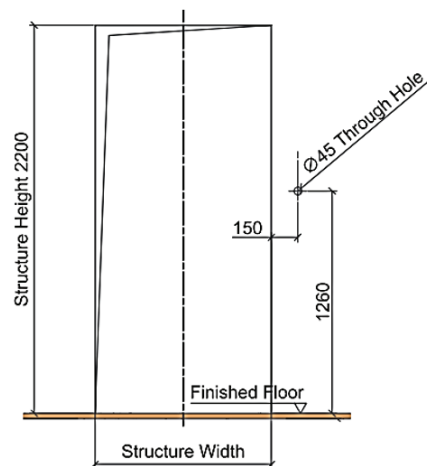


For Entrance Without Fireman Switch

Structure Opening of Entrance



For Entrance With Fireman Switch



For Entrance Without Fireman Switch

Symbol	AS-1X
W	10
D	10

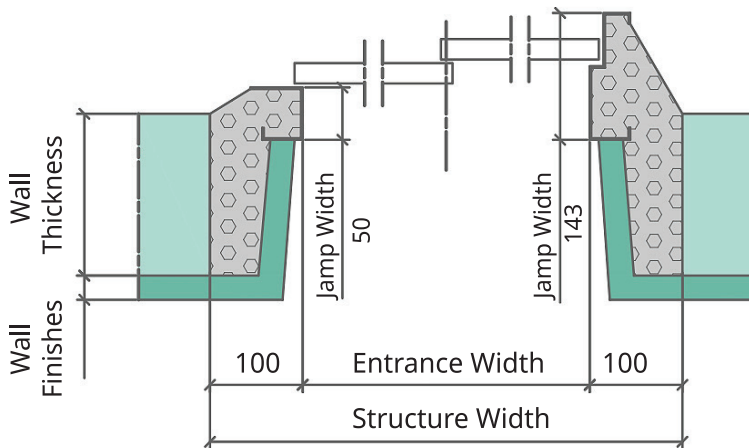
Remark

1. The construction contractor is responsible for the reserved holes for landing doors and related devices.
2. The above picture is for reference only. For detailed parameters, please contact our local agent.
3. The above parameters are based on Hitachi standard.
4. When configuring a firefighter-only function, a firefighter switch is configured on the hall door side of the fire refuge floor.

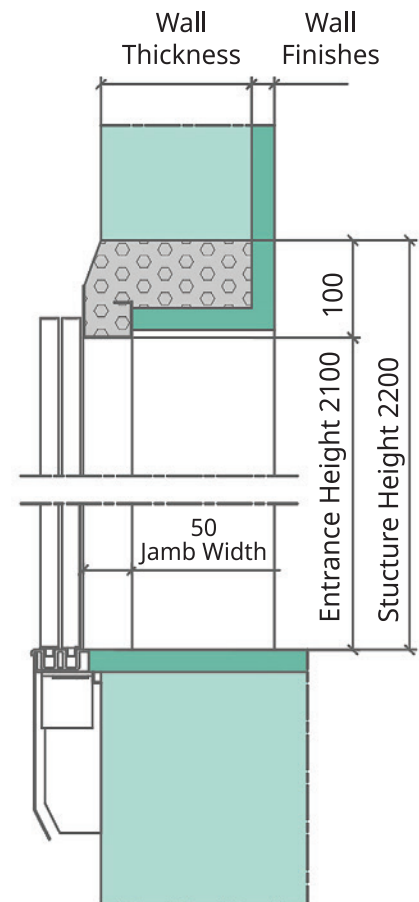
ENTRANCE DESIGN

Narrow Jamb (AS-1X)

X-X Section



Y-Y Section



The following shall be furnished by building contractors:

- Building Structure
- Wall and Floor Finishes
- Grouting Work

Remark

The above picture is for reference only. For detailed parameters, please contact our local agents.

NOTE

This information in this catalogue is subject to change without notice. The information and diagram in this catalogue reflect the technical feature and configuration of the elevator model at press time (refer to the version number). In line with the principle of continuous development of products, our company reserves the right to change the selection of product technical parameters and color at any time. The existing image technology cannot accurately reproduce the elevator component structure and decoration color. Therefore, this catalogue only provides general information, not as a contract document. The specific configuration parameters are subject to the formal agreement.

